



*jordan fishwick*

10 Turing Drive, SK9 2ST  
Guide Price £734,950





## Turing Drive Wilmslow SK9 2ST

Guide Price £734,950



A TRULY IMPRESSIVE Detached Property – Welcome to this exceptional six bedroom home offering expansive and beautifully appointed accommodation arranged over three floors. Built in 2013 as part of a select and sought after development, this property has been thoughtfully enhanced by its current owners to offer a luxurious yet practical family living experience. With six generously sized bedrooms across three floors, impressive open-plan kitchen/family/dining room, three marvellously refitted bathrooms and a downstairs WC, large rear garden with patio and lawn, double garage and spacious driveway. Contemporary upgrades throughout the ground floor include a stylish entrance hallway with attractive flooring which flows throughout the ground floor leads to the spacious living room featuring a bay window which fills the space with natural light. To the rear, the heart of the home, is the stunning open-plan kitchen/dining/family room with French doors opening to the rear garden — ideal for entertaining and everyday family life. The kitchen has been beautifully refitted with high spec units and appliances. The property also benefits from a separate utility room and downstairs WC. The first floor offers four bedrooms, including a luxurious master suite featuring two dressing areas/walk-in wardrobes and a contemporary en-suite with both bath and separate shower. Bedroom two also benefits from its own en-suite, while the additional bedrooms are served by a stylish refitted family bathroom. The top floor provides two further double bedrooms and a modern, refitted shower room – perfect for guests, teenagers, or a home office setup. To the front a large driveway offers ample off road parking and leads to the double garage. The enclosed rear garden is a fantastic size, mainly laid to lawn with a flagged patio area.








- Fantastic Detached Residence
- Six Generous Bedrooms
- Three Superb Bathrooms
- Stylish Kitchen
- Double Garage
- Ample off road parking
- Enclosed lawned rear garden



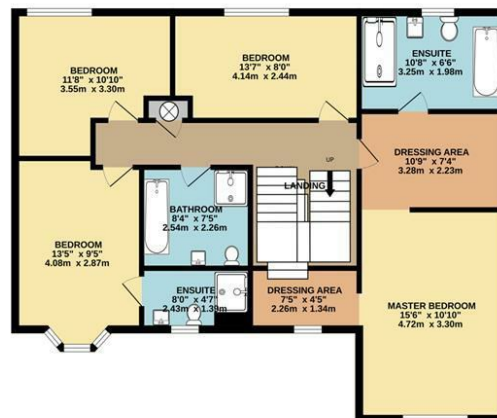
Energy Efficiency Rating		
	Current	Potential
Very energy efficient - lower running costs		
(92 plus) A		
(81-91) B		
(69-80) C	78	84
(55-68) D		
(39-54) E		
(21-38) F		
(1-20) G		
Not energy efficient - higher running costs		
England & Wales	EU Directive 2002/91/EC 	



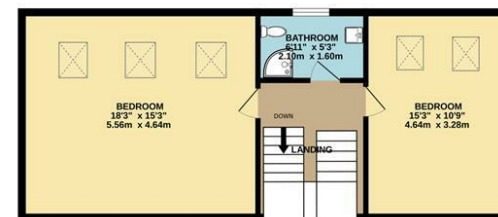
GROUND FLOOR  
1026 sq.ft. (95.3 sq.m.) approx.



1ST FLOOR  
926 sq.ft. (86.0 sq.m.) approx.



2ND FLOOR  
552 sq.ft. (51.3 sq.m.) approx.



TOTAL FLOOR AREA : 2504 sq.ft. (232.7 sq.m.) approx.  
Measurements are approximate. Not to scale. Illustrative purposes only  
Made with Metropix ©2025



These particulars are believed to be accurate but they are not guaranteed and do not form a contract. Neither Jordan Fishwick nor the vendor or lessor accept any responsibility in respect of these particulars, which are not intended to be statements or representations of fact and any intending purchaser or lessee must satisfy himself by inspection or otherwise as to the correctness of each of the statements contained in these particulars. Any floorplans on this brochure are for illustrative purposes only and are not necessarily to scale.

Offices at: Chorlton, Didsbury, Disley, Hale, Glossop, Macclesfield, Manchester Deansgate, Manchester Whitworth Street, New Mills, Sale, Wilmslow and Withington

36-38 Alderley Road, Wilmslow SK91JX  
**01625 532000**

wilmslow@jordanfishwick.co.uk  
www.jordanfishwick.co.uk